



# Transforming Non-Profits with Data-Driven Solutions

Streamline operations, create tailored solutions, and amplify your mission with strategies that drive meaningful connections.





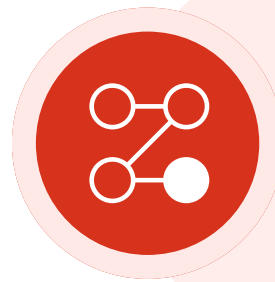
# About Our Company



## A Brief Story About the Company

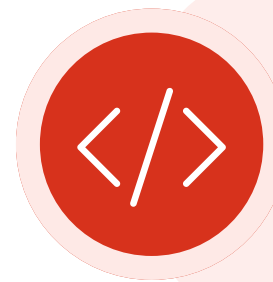
Our journey at SwiftCore Technologies began in January 2020, inspired by our previous experience at SickKids Foundation, where we automated donor management and donation processing. Since then, SwiftCore, a Toronto-based digital agency, has been driven by a constant need to innovate and build systems that provide real-world impact. We achieve this through partnerships with private sector and non-profit organizations whose mission is to make a positive difference in the world.

# Our Pillars of Impact



## Data Collection & Integration

Unify donor, client, financial, and program data into a single source of truth.



## Data Quality & Enrichment

Cleanse and standardize data for accuracy and trust.



## Data Activation & Usage

Activate insights with segmentation, reporting, and analytical decision tools.

## Our Services

# Data Collection & Integration

An effective strategy needs accurate data. We assess a non-profit's data to ensure all key information—from donor and client interactions to program metrics is collected, centralized, and ready for decisions. A key example is integrating website donations or client support interactions into the CRM.

### Key Solutions

- Process Automation: Free up staff by automating tasks such as data entry and gift processing.
- Data Integration: Connect CRM, email, accounting, and program systems to eliminate silos and create a 360° donor view.

### Benefits

- Single Source of Truth: Centralized hub showing complete donor and performance data.
- Increased Efficiency: Saves time, reduces errors, and boosts productivity.
- Opportunity Identification: Collect key data points, uncovers trends and insights hidden across separate systems.

## Our Services

# Data Quality & Enrichment

Transform raw data into actionable insights by cleansing records, removing duplicates, and mapping relationships to reveal hidden networks.

### Key Solutions

- Automated Data Quality Pipeline: Our custom-tailored solution continuously monitors and cleans your database to ensure accuracy and completeness. Its sophisticated duplicate handling uses fuzzy matching to ensure safe corrections. High-confidence duplicates are merged automatically, while complex decisions are flagged for a final, human-in-the-loop review.

### Benefits

- Enhanced Trust in Data: Ensures fundraising and communications use accurate, current information.
- Duplicate Management: Uses contextual clues beyond email/phone to merge complex duplicates.
- Hidden Prospect Networks: Reveals valuable donor, board, household, and prospect connections for major gift opportunities.

## Our Services

# Data Activation & Usage

With clean, centralized data, we help clients achieve goals through targeted fundraising, real-time tracking, and stronger donor relationships.

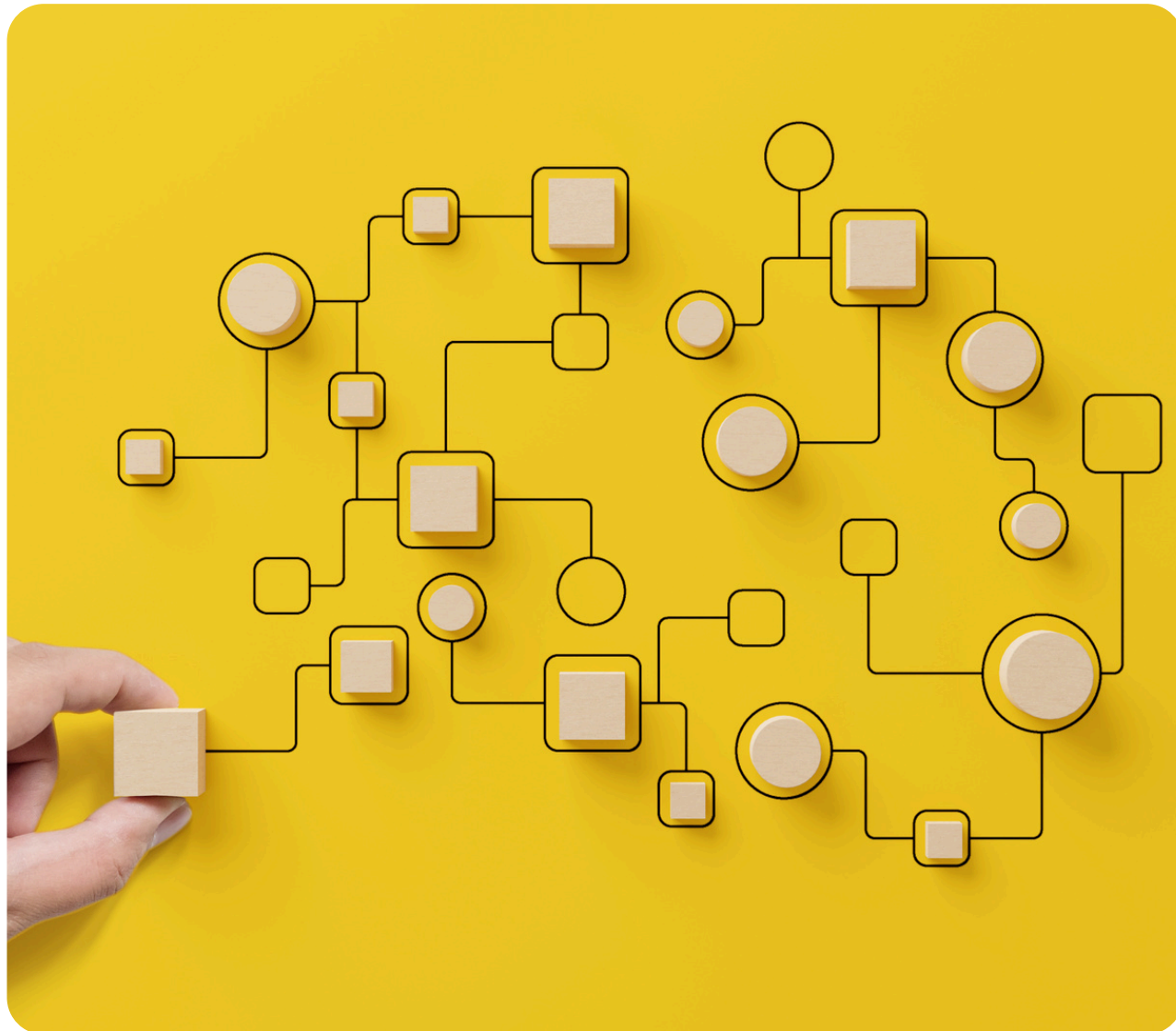
### Key Solutions

- Donor Segmentation & Engagement: Build dynamic segments for personalized outreach.
- Custom Reporting & Dashboards: Real-time tracking of donor trends, campaign performance, and strategic goals.

### Benefits

- Targeted, High-Impact Fundraising: Raises response rates and ROI through segment-specific campaigns.
- Informed Decision-Making: Provides leaders timely intelligence to adjust strategies and allocate resources.
- Stronger Donor Relationships: Enables personalized stewardship, improving retention and loyalty.

# Our Process



- Complimentary Kick-Off & Discovery**  
Understand your mission, goals, and challenges to set a clear technology roadmap.
- Data & System Analysis**  
Audit systems, workflows, and data quality to identify gaps and opportunities.
- Design, Development & Quality Assurance**  
Build tailored digital solutions from integrations to automation designed for scalability and impact.
- Implementation & Support**  
Deploy solutions, train your team, and provide ongoing support to ensure long-term success.

*Our engagement model is built for flexibility, allowing us to adapt as your organization's priorities shift. We provide a dedicated number of hours each month to focus our efforts on developing the solutions you need most*

# Notable Projects

A few of the impactful projects we've had the privilege to work on.



# Pontifical Mission Societies

## Challenge

Fragmented donor data, manual workflows, lack of segmentation, and outdated infrastructure.

## Our Approach

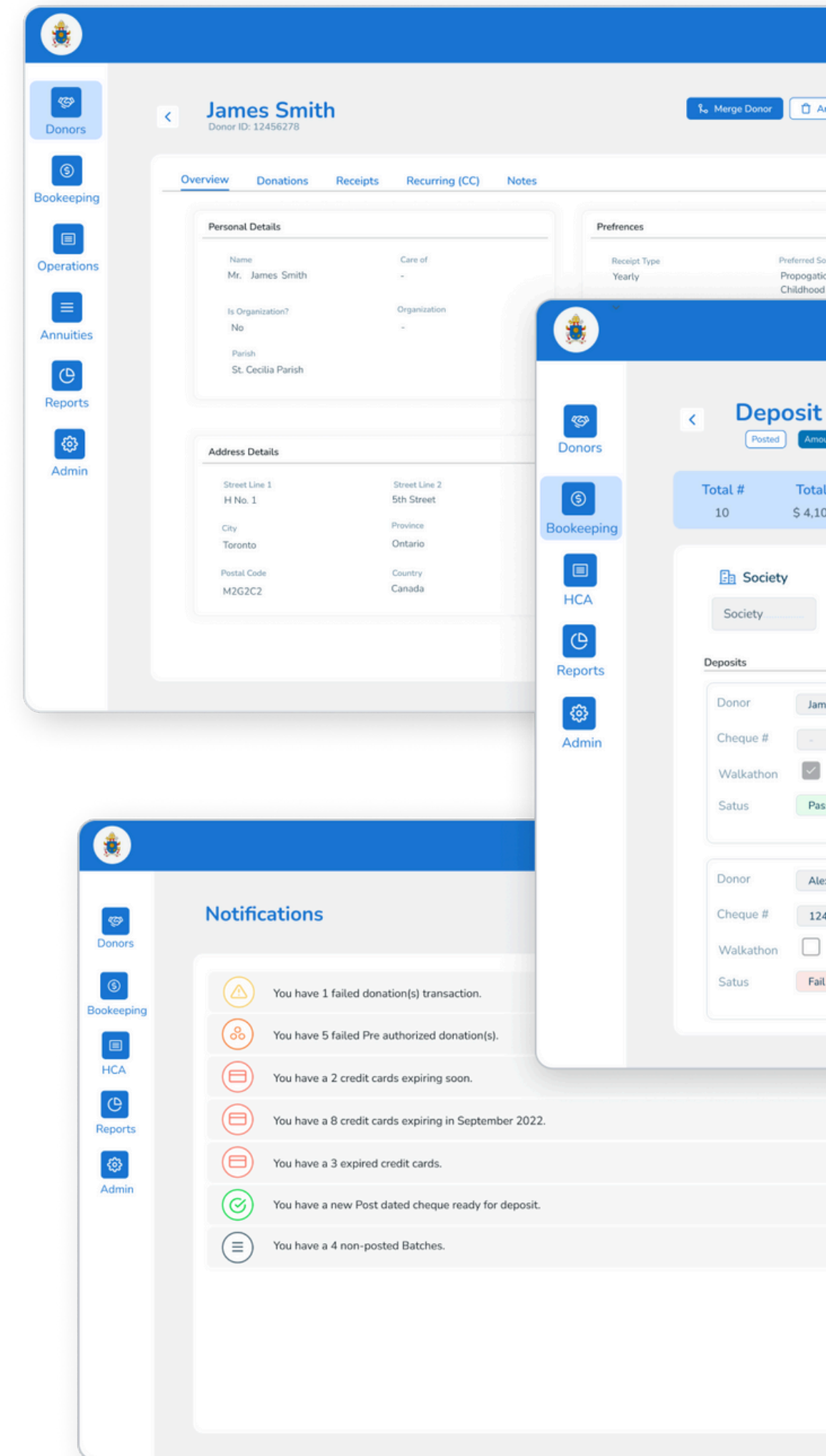
Migrated legacy system to a cloud CRM, automated tax receipting & donation workflows, established governance.

## Results:

- Streamlined donation operations.
- Unified donor database as single source of truth.
- Increased fundraising agility with segmentation & trend analysis.
- Improved stewardship with timely donor communications.

## Impact

PMS now has scalable infrastructure, greater donor insight, and the agility to grow mission-driven fundraising.



# Gakino'amaage: Teach For Canada (G:TFC)

## Challenge

Inconsistent processes, poor CRM adoption, disconnected data sources, unstructured donor pipeline.

## Our Approach

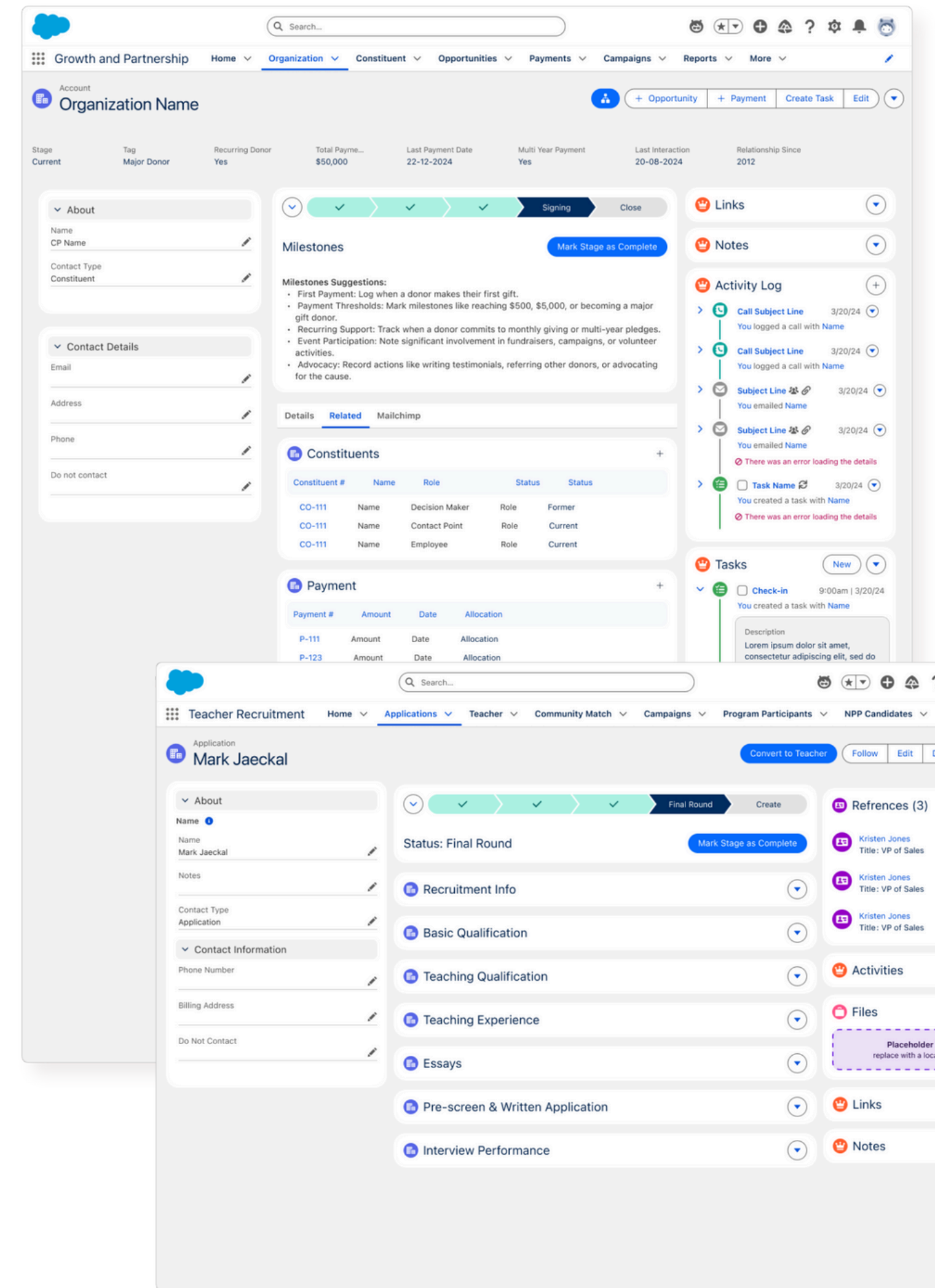
Conducted cross-functional assessment, optimized Salesforce CRM, introduced governance, and built a digital transformation roadmap.

## Recommendations Delivered:

- Centralized data into a unified CRM.
- Optimized Salesforce for fundraising & engagement.
- Established data cleansing & deduplication routines.
- Developed reporting infrastructure for segmentation & storytelling.

## Impact

G:TFC gained clarity and a roadmap to strengthen internal data culture, scale fundraising, and build long-term donor trust.



# Swiftcore Benefits

## 01 Flexible Team

A team of experts offering flexible and responsive collaboration, with solutions that are adaptable to your organization's needs.

## 03 Technical Expertise

Seasoned experts in data management and process automation who provide direct consultation to build ambitious yet achievable solutions.

## 02 Non-Profit Focused

A dedicated partner with several years of experience developing specialized digital solutions for the non-profit sector.

## 04 Scalable Solutions

Solutions designed to improve data quality at scale, with a roadmap of possible enhancements to meet your future needs.



# You're in Good Company!



**Pontifical Mission Societies**

Toronto, Canada



**TEACH  
FOR  
CANADA**



**MISSION CRM™**  
by sylogist



The Center for Applied  
Management Practices



**F O O D  
S T A S H  
F O U N D A T I O N**

@ceanic Impact

# Thank You

## Contact Us



Ryan Armogan



[contact@swiftcoretech.com](mailto:contact@swiftcoretech.com)



[swiftcoretech.com/](https://swiftcoretech.com/)

